

Capacity Building

# IUA delineation workshop



water affairs

Department:  
Water Affairs  
REPUBLIC OF SOUTH AFRICA



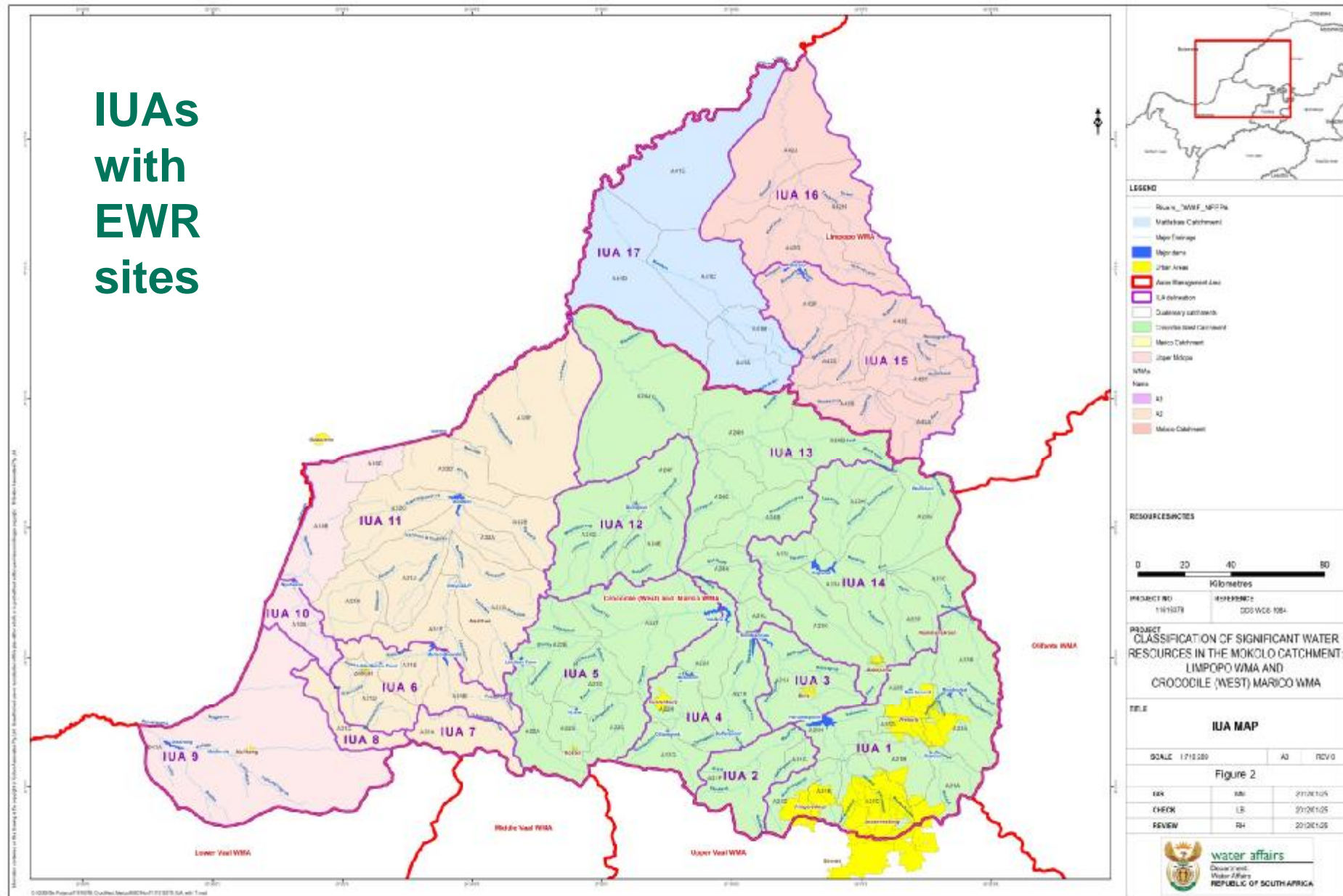


## Objectives of IUA delineation

- n Establish broader scale units for assessing the socio-economic implications of different catchment configuration scenarios and to report on ecological conditions at a sub-catchment scale.

Combination of the socio-economic zones and watershed boundaries, within which ecological information is provided at a finer scale.

# IUAs with EWR sites





## Socio-economic zones

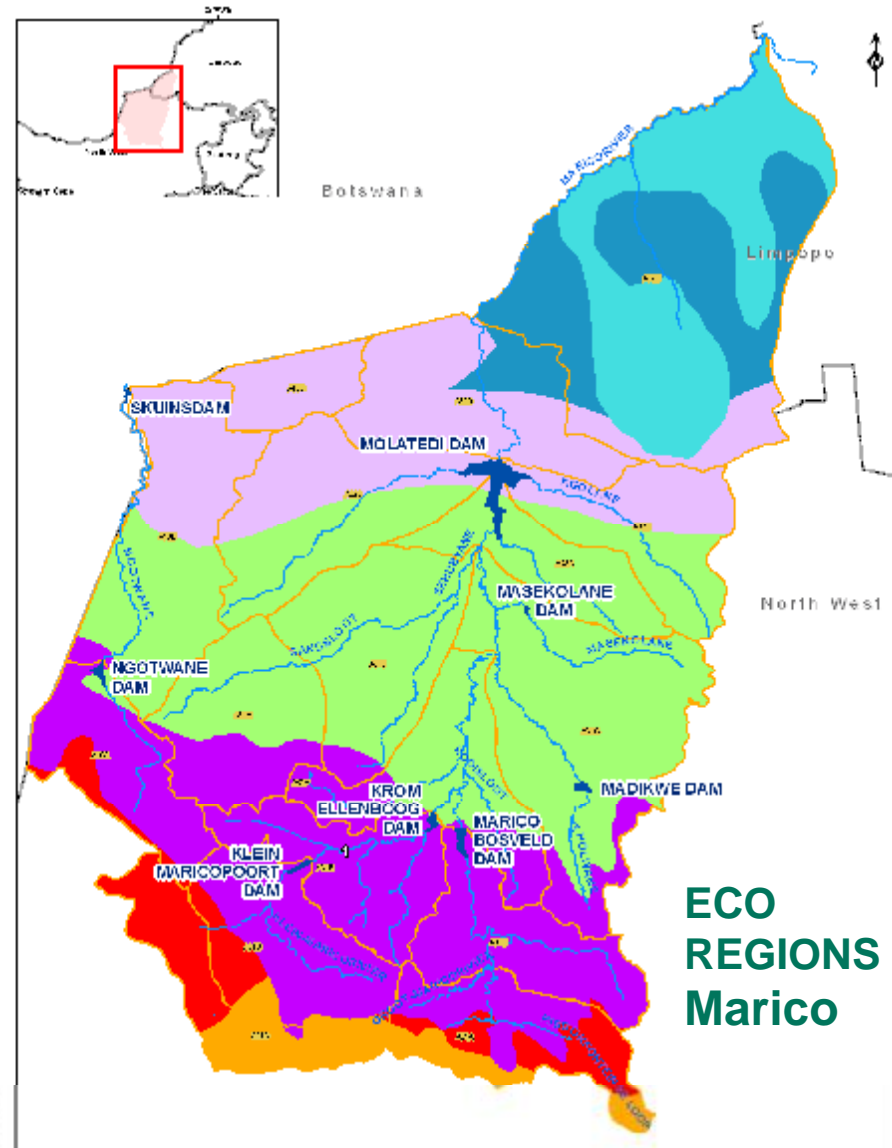
Name	Description	Location (Quaternary Catchment)
Urban SEZ	The Urban SEZ includes the major metropolitan municipalities of Johannesburg, Tshwane and the other municipalities in-between. The SEZ includes a large portion of Gauteng conurbation, which includes: Johannesburg, Ekurhuleni (East Rand), and Tshwane (greater Pretoria). The conurbation comprises a population of approximately 14.6 million people.	A21A-E and A21G and H; A23A,B,D and E.
Conservation SEZ	The areas of particular importance to conservation efforts include the Cradle of Humankind and the Magaliesburg Protected Area as well as the upper catchment of the Marico River. The dolomitic headwaters of the Marico River contain unique biodiversity and it has been recognised as an important fish sanctuary. Other possible areas include the Madikwe Protected Area located in the lower Marico Catchment.	Magaliesburg PA: A21F, A21G, Upper Marico headwaters: A31A,B,C,D,E Madikwe: Lowe portion of A32E
Mining SEZ	The Mining SEZ comprises of the platinum mining area surrounding the town of Rustenburg. The CWM WMA contains a large portion of the Bushveld Igneous Complex, the largest platinum group metals (PGM) deposit worldwide.	A21J, A21K, A21L, A23K, A23L
Agricultural SEZ	A large proportion of the CWM WMA falls within this category. The Upper Crocodile River area below the Hartbeespoort Dam is largely of a commercial agricultural nature. The area encompassing the Moretele River is largely temporary commercial dryland agriculture in nature and includes the agricultural district of Bela Bela. The lower Crocodile River Catchment down to the Limpopo River is characterised by some commercial agricultural activities, some subsistence farming and cattle/game farming. Upper Molopo Catchment consists mainly of dryland and some subsistence agriculture. The Marico Catchment below the Marico Bosveld Dam comprises commercial and small-scale agriculture. The Mokolo Catchment comprises some commercial and small-scale agriculture.	Essentially the rest of the WMA.



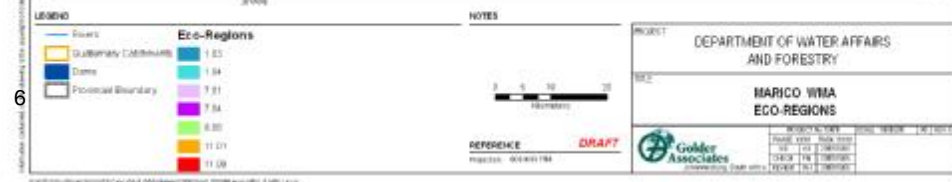


# **MOKOLO RESERVE DETERMINATION** Level 1 and 2 Ecoregions

## **ECO REGIONS Mokolo**

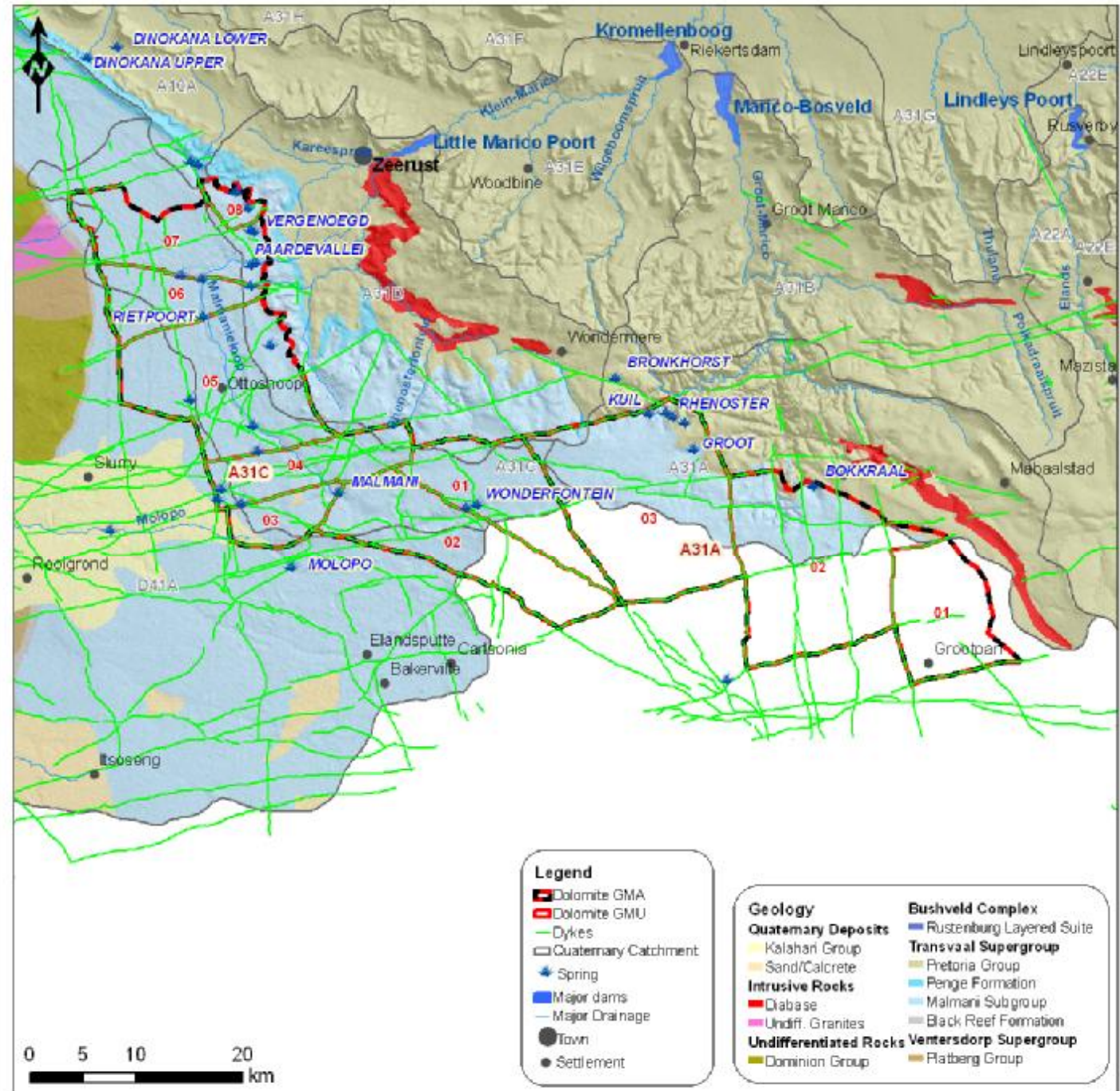


## **ECO REGIONS Marico**





## Ground- water: rationale for IUA 8



water affairs

Department:  
Water Affairs  
REPUBLIC OF SOUTH AFRICA



# Discussion and questions

